



TRANSPORT INFRASTRUCTURE

Specialist Civil Engineering and Piling Contractors





WHO WE ARE...

DAWSON-WAM are specialist civil engineering and piling contractors with operations in the UK and Ireland.

The company undertakes large scale civil engineering and piling projects for public authorities, contractors and developers.

The company was founded in 1971 and has based its business around a collaborative approach to provide our clients with innovative cost effective solutions to today's construction challenges.

CONTACT INFO

Northern Ireland

Lisdoonan, Belfast Road,
Saintfield Ballynahinch, BT24 7EP

Tel: (+44) 028 9081 3105

Civils Enquiries:
est@dawsonwam.co.uk

Southern England

The Moors Westoning Road,
Greenfield, Bedford, MK45 5BJ

Tel: (+44) 01525 715522

Piling Enquiries:
piling@dawsonwam.co.uk

LARGEST AND MOST POWERFUL SHEET PILING RIGS IN THE UK & IRELAND

We own and operate 6nr ABI TM22s and 2nr RTG RG27S leader rigs, the largest and most powerful rigs in these islands. These rigs are multi-disciplined systems capable of the following techniques;

- Cased CFA
- Impact Hammer
- CFA
- Hydro Press
- Vibro Hammer

QUICK DOCKING TECHNOLOGY

Our piling rigs operate the latest quick docking technology, allowing automated connection of hydraulics, electronics and pin systems to the leader system saving time and reducing people/plant interfaces.

JUST IN TIME DELIVERIES

DAWSON-WAM own a 13 acre storage yard and fabrication facility just off the M1 Junction 12 in Bedfordshire. With our in-house lorries, we are able to store thousands of tonnes of piles allowing security of supply and just in time deliveries to site.

DIGITAL REHERSALS

Our engineers use the latest digital technology to plan our works in advance ensuring a right first time approach. All our equipment is detailed in 3D model allowing accurate simulation of the works in advance to look for clashes and risk, whilst allowing opportunities to be realised before works start on site.



BUILDING STRONG FOUNDATIONS FOR A CONNECTED FUTURE

In the transport sector, strong and reliable foundations are essential for safe and sustainable infrastructure. Our advanced piling solutions, combined with our civil engineering expertise, ensure the stability and longevity of critical transport projects, from motorways and railways to bridges and tunnels.

By integrating piling with broader civil engineering capabilities, we offer a seamless approach to infrastructure development, reducing risks and enhancing project efficiency.

WHY CHOOSE OUR MULTI-DISCIPLINED APPROACH?

Integrated Piling & Civils Expertise

We combine foundation engineering with structural, geotechnical, and civil engineering knowledge to deliver comprehensive, cost-effective solutions.

Expertise in Challenging Ground Conditions: Our team specialises in complex soil and geological conditions, ensuring the best foundation for any transport project.

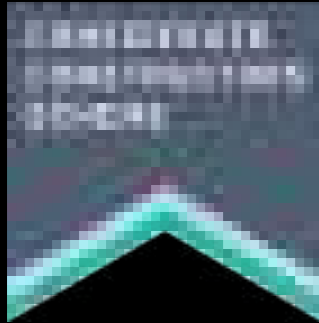
Innovative Techniques & Materials: From sheet piling and driven piles to ground improvement and reinforced structures, we utilise the latest technologies for durable and efficient results.

Sustainable & Efficient Construction: We prioritise eco-friendly practices, including material reuse and carbon reduction, without compromising performance.

Safety & Compliance First: Adhering to the highest industry standards, we integrate safety, environmental, and quality assurance throughout the project lifecycle.

End-to-End Project Delivery: Our multidisciplinary expertise allows us to streamline construction phases, optimising time and cost while maintaining engineering excellence.





CONSIDERATE CONSTRUCTOR SCHEME COMPANY PARTNER

In recognition of our efforts and commitment to improving the image of construction DAWSON-WAM Ltd are delighted to be a founder Company Partner within the Considerate Constructors Scheme Company Registration.

We have welcomed the opportunity to work closer with the Scheme, share best practice and promote further registration within the industry. The Schemes principles have become our policies and we hope to continue to have a positive impact on the future of the Scheme.



We consistently achieve scores of 45/45 for our effort within the CCS winning Gold in 2024, Most Considerate Site in 2022 and the Leading Light Award in 2022 for Plastic Reduction.

APPRENTICESHIPS AND UNDERGRADUATE PROGRAMMES

We have a long history of nurturing and encouraging young people into our industry. 80% of our senior leadership have come from junior positions within the company. We are members of the 5% Club Charter.

Our Harry McFarland who is an apprentice civil engineer with the company won Apprentice of the Year at the most recent Construction Employers Federation Awards.



SECOND HAND SHEET PILES

The first ever use of second hand sheet piles was achieved by DAWSON-WAM on the M4 Smart Motorway. A groundbreaking departure from standard which opens the door for huge carbon savings in future National Highway projects.

SUSTAINABILITY & CARBON

Through our ISO14001 and PAS2080 accreditations we champion sustainability and carbon reduction at every opportunity. Planting of trees, solar power, ground source heat pumps, electric vehicles, Eco Sheet Pile Plus, low carbon concrete, steel mat hire, energy efficiency drives, second hand sheet piles reuse.

To highlight our sustainability credentials we have won the CED Sustainability Company of the Year, and achieved 83.8% and 93.0% in our most recent CEEQUAL awards.

SOCIAL VALUE

We are actively involved as CITB & ICE Ambassadors delivering career talks to young people and those interested in a career within the industry. We locally support schools through the CITB Adopt a School initiative which kick started in 2020.

We have a set KPI target for volunteering hours against such programmes. Volunteering provided previous includes people power and materials to better local groups and enterprises in the areas that we work.

We set clear targets for engaging local employment and buy local policies within each location that we work.





NUNEHAM VIADUCT EMERGENCY REPAIR

Installation of driven tubular piles and sheet piles to support a failed railway viaduct abutment.

Piling works were the critical part of a 10 week emergency closure of the rail line outside Oxford with 24/7 working ensuring the rail reopened 1 day ahead of schedule.





HS2 LOTS S1 & S2 WEST RUISLIP

Extensive sheet piling package immediately adjacent to Network Rail line, sensitive environmental area and neighbouring properties.





HS2 NORTHOLT TUNNEL CONVEYOR

Installation of foundations to support the 2km long conveyor carrying spoil from the Northolt Tunnel construction.





HS2 DELTA JUNCTION

Multiple sheet piled cofferdams installed into mudstone for a critical and complex programme of works.

Works included design and installation of sheet piling, excavation and propping, and removal of temporary works when complete in a £10M package of works.

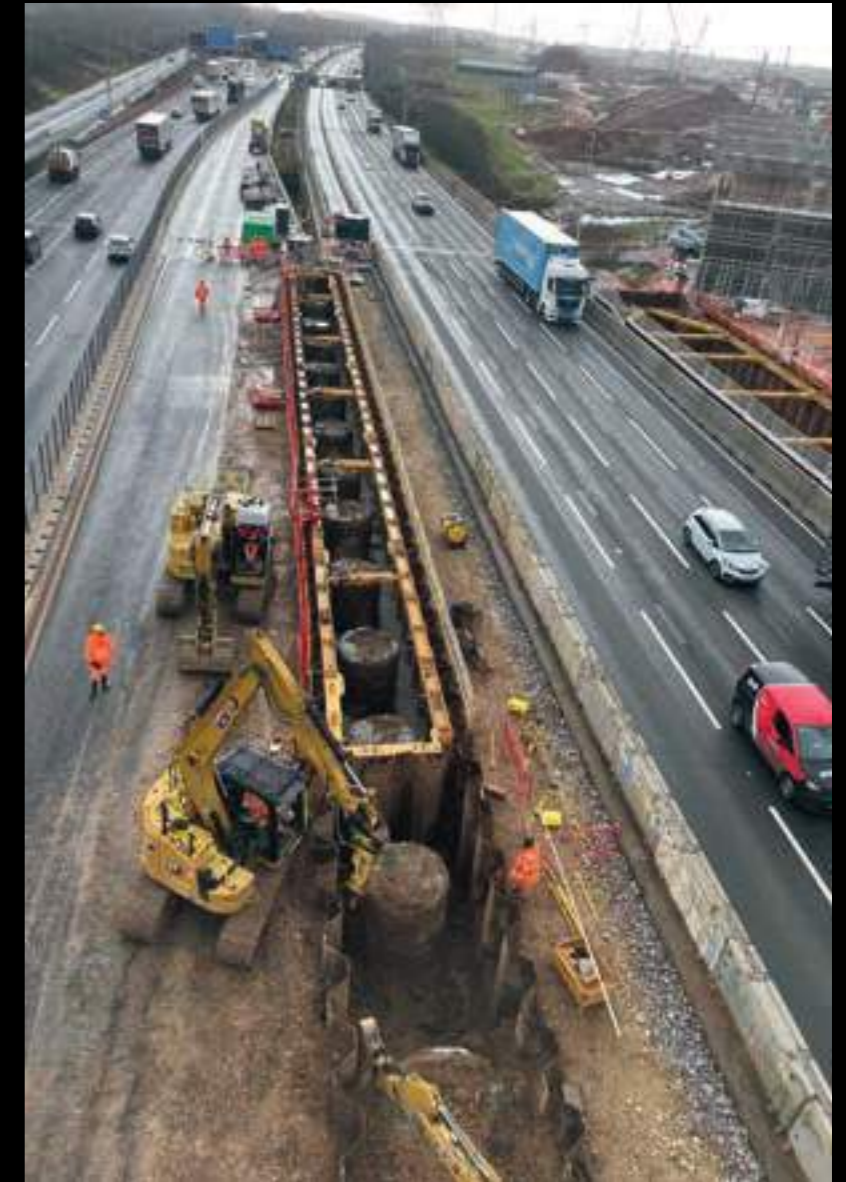




M42 TWIN BOX STRUCTURE

The M42 Twin Box Structure will carry the new HS2 line across the M42.

Works took place either side of the motorway and within the central reservation and included temporary sheet piling, propping, excavation and pile capping.





HS2 SUBLOT 2

A multidisciplinary pack of works in across some environmentally sensitive areas.

Works included sheet piling, driven piles, secant walls, conventional piling, silent and vibrationless sheet piling, propping, excavation and general civil works.





HS2 LOTS N1 & N2 COVENTRY

Temporary works geotechnical packages and associated works throughout the N1 & N2 areas.



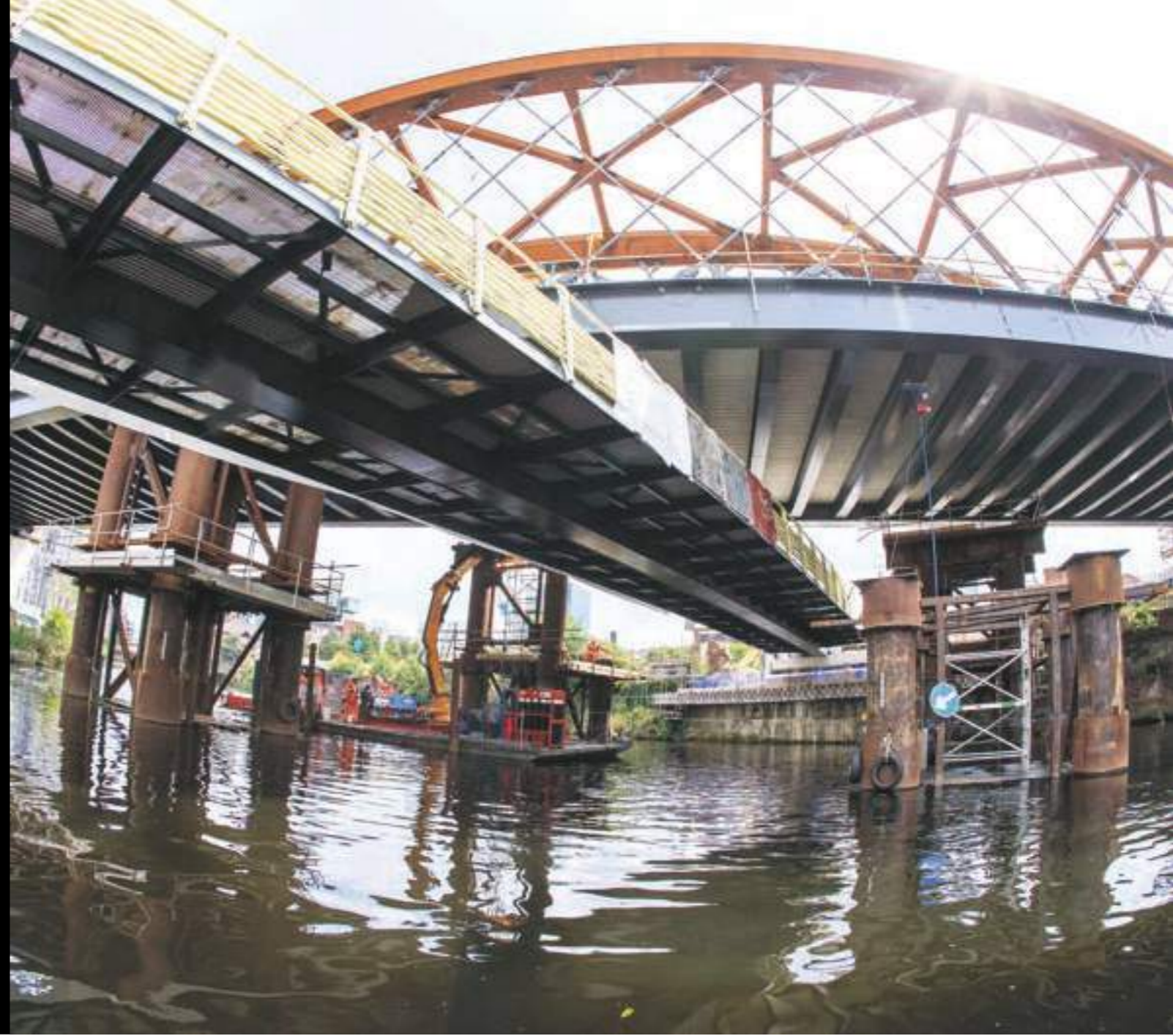


NORTH ACTON, LONDON

Construction of a HZM wall installed using limited vibration preaugering and water jetting techniques for development adjacent to Network Rail.

ORDSALL CHORD, MANCHESTER

Installation of temporary steel bearing piles and temporary steel frame to facilitate removal of existing bridge and construction of a new bridge.





**CREWE GREEN
LINK ROAD**

Installation of 600 linear metres of sheet piles for rail underpass.



CREWE GREEN LINK ROAD RAIL UNDERPASS

Installation of 21m long AZ50 steel sheet piles during rail possession.



CREWE GREEN LINK ROAD RAIL UNDERPASS

Backdriving AZ50 piles with rig mounted impact hammer.



BISHOPGATE, LEEDS

Piles foundations for new entrance to Leeds Train Station in a very tight and congested site.

Piles were installed using permanent steel liners, through an existing barrel vault structure using our Cased CFA system.





RAILWAY POSSESSIONS

DAWSON-WAM have competent management, design and delivery teams experienced in the delivery of works during railway possessions. We have significant experience delivering directly to Network Rail and on associated rail infrastructure and highways projects in close proximity to rail lines.





SMART MOTORWAY NEAR PROGRAMME

Installation of 22nr sheet pile retaining walls for a new emergency areas on the motorway.

Works took place over the M1, M3, M4, M5 and M25 motorways in an intense sequence of works.

Work included the first ever use of second hand piles in a permanent retaining wall.





M1 J16-19 SMART MOTORWAY

Installation of sheet pile retaining walls into underlying mudstone and sandstone for motorway improvements.

Thought to be the heaviest ever sheet piles installed on a motorway, HZ-M piles weighing 8.7t each were installed 20m long into mudstone.





M42 JUNCTION 6 UPGRADE

Multi phased sheet piling installation on the M42 installing sheet piles into mudstone bedrock.

Sheet piles were up to 17m in length and were installed using advanced preaugering and vibro driving. Steel mats were used to provide stable working platforms.





M4 J3-12 SMART MOTORWAY

A £14M subcontract sheet piling package for permanent and temporary sheet pile works, and ground anchors including considerable value engineering for elements bridge abutments. Completing a total of 6km of permanent sheet piles retaining walls on the SMP and a further 1.2km around the structures.





M6 J13-15 SMART MOTORWAY

The installation of over 100nr sheet piles walls in a £7.7M sheet piling subcontract with the majority of piles installed into weak rocks of sandstone and mudstone.





M6 J13-15 ADDITIONAL EMERGENCY AREAS

Secant piled retaining wall installed immediately adjacent to live motorway retaining up to 2.5m.





A1 BIRTLEY TO COAL HOUSE

£10M package to install temporary and permanent works sheet piling and associated works.



M6 J2-4 SMART MOTORWAY

Installation of sheet piles walls and minor works foundations over a 22km stretch of motorway.

HS2 S1 & S2 PROJECT

Sheet piling subcontract with a value of estimated at over £7M





M5 JUNCTION 4A-6 SMART MOTORWAY PROJECT

Installation of 60nr retaining walls to facilitate the upgrade of major motorway.





A13/M25 JUNCTION UPGRADE

Installation of sheet piled retaining walls using 80t ABI TM22 leader rig.





M1 JUNCTION 19 UPGRADE

Sheet piled retaining wall installation.



M25 EMERGENCY SLIP REPAIR J26-25 ANTICLOCKWISE

Emergency embankment stabilisation works requiring daily full mobilisations to allow unrestricted motorway flows at peak periods.



M25 EMERGENCY SLIP REPAIR

Night time traffic management restrictions, east of J23 clockwise.



M25 WIDENING, SECTION 4B CLOCKWISE

AZ king pile wall being installed.



M25 WIDENING J29-30 CLOCKWISE SECTION 4C

HZ/AZ Combination Wall being installed.



M25 WIDENING J29-30 CLOCKWISE SECTION 4C

Backdriving HZ piles with Impact hammer.



A1 BIRTLEY TO COAL HOUSE GANTRY PILING

Installation of piled foundations for 14 new gantry bases on the A1 Gateshead.

Piles were up to 900mm in diameter and 23m long and used Cased CFA techniques to deal with a range of soil conditions including coal measures, very soft alluvial deposits and mudstone and sandstone rock.





A43 SYRESHAM

A contiguous pile wall for a geotechnical slip repair on the side of a dual carriageway with piles being installed 1.5m above track level.

Works took place over a series of nights with all equipment fully removed from site each nights so that the carriageway could be reopened during daytime.





MANHATTAN GATE BRIDGE, MIDDLESBROUGH

Construction of 1200mm diameter marine piles and 900mm land piles for new lift up bridge.



M6 J21A-26 SMART MOTORWAY PROJECT

Installation of king post retaining walls to facilitate the construction of a smart motorway under the Smart Motorway Alliance framework.



MUSTANG PARK, DAVENTRY

Installation of over 600m of king post walls retaining up to 4m with tie rods and sheet pile anchor walls for a new storage facility





M25 JUNCTION 7 ROOKS NEST

850mm cased CFA contiguous piled wall installation for embankment stabilisation.



PANSPORT BRIDGE, ELGIN FLOOD ALLEVIATION SCHEME

Installation of 850mm Cased CFA Bearing Piles for a new road bridge.

M3 JUNCTION 2 - 4A SMART MOTORWAY

Installation of sheet pile walls, gantry piles and king post walls.



M1 JUNCTION 19 UPGRADE

Installation 2000 vibro stone columns.



GROUND ANCHORS AND TENSION MICRO PILES

DAWSON-WAM have considerable experience and knowledge in the design and installation of temporary and permanent restraints to retaining walls using ground anchors or tension micro piles. We also are skilled in fabricated steelwork ancillary work such as walings and propping.





A921 MAINS BRAE RETAINING WALL, ABERDOUR, FIFE

630mm cased CFA piles installed into basalt to carriageway embankment.



M1 JUNCTION 19 UPGRADE

600t crane installing motorway overpass, supported on steel mats.



A92, MONTROSE, SCOTLAND

Temporary road and pedestrian bridge during new bridge replacement.



WOOD WHARF TEMPORARY DECK, CANARY WHARF

Construction of a temporary platform to allow construction of a marine deck for emergency services access to Canary Wharf's new developments.



HERNE HILL, SOUTH LONDON

King post wall retaining Network Rail asset.



BROMLEY SOUTH CENTRAL, KENT

Secant wall supporting a 10m deep excavation adjacent to live Network Rail main line.



VICTORIA STATION UPGRADE, LONDON

750mm cased CFA secant wall
installed above London Underground
line for new station entrance.

TRANSPORT INFRASTRUCTURE

Specialist Civil Engineering and Piling Contractors



www.dawsonwam.co.uk